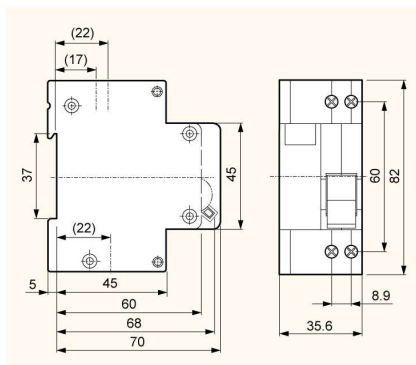


Residual current circuit breakers

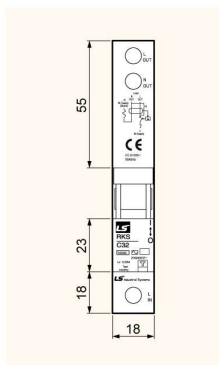
2 and 4 pole series up to 63AF

Type	RCBO							
	RKP	RKS	RKS-b	32KGRc	32KGRd	32GRhc	32GRhd	
Protection	Ground fault and overcurrent		Ground fault and overcurrent		Ground fault and overcurrent		Ground fault and overcurrent	
Rated current, In	3(C,D),6,10,16,20,25,32A (B,C,D curve)		6, 10, 16, 20, 25, 32A (B, C curve)		15, 20, 30A		15, 20, 30A	
Rated residual current								
Operating, IΔn	30, 100, 300mA(non-adjustable)		30, 100mA(non-adjustable)		15, 30mA(non-adjustable)		15, 30mA(non-adjustable)	
Non-operating, IΔno	0.5IΔn		0.5IΔn		0.5IΔn		0.5IΔn	
Number of poles	1P+N		1P+N		2 pole		2 pole	
Rated voltage	230VAC		230VAC		110/220VAC		110/220VAC	
Residual current off-time	≤0.1 sec.		≤0.3 sec.		≤0.03 sec.		≤0.03 sec.	
Standard	IEC 61009		IEC 61009		KS		KS	
Approval	CCC, CQC CB, CE		SEMKO CB, CE		-		-	
Type of trip								
Ground fault	Electronic		Electronic		Electronic		Electronic	
Overcurrent	Thermal-magnetic		Thermal-magnetic		Bimetallic		Bimetallic	
Breaking capacity	4.5kA		10kA		1.5kA	2.5kA	1.5kA	2.5kA
Conditional short circuit capacity	-		-		-		-	
Electrical endurance	20000 operations		4000 operations		6000 operations		6000 operations	
Mount	On 35mm DIN rail		On 35mm DIN rail		On 35mm DIN rail / Screw		On 35mm DIN rail / Screw	
Width	35.6mm		18mm		35mm		33mm	
Terminal	Lug type (cable up to 10mm²)		Lug type (cable up to 10mm²)		Screw clamp type (cable up to 5.5mm²)		Screw clamp type (cable up to 5.5mm²)	
Type of operation	-		-		-		-	
Dimension	See drawing 1		See drawing 2	See drawing 3	See drawing 4		See drawing 5	
Characteristic curve	See page 5(Curve 1)		See page 5(Curve 1)		Curve 3		Curve 4	

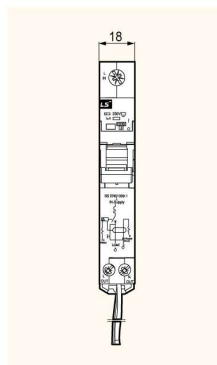
Drawing 1: Type RKP



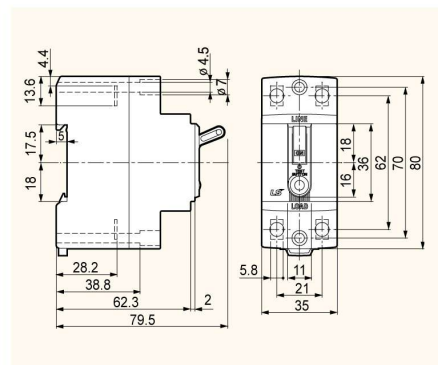
Drawing 2: Type RKS



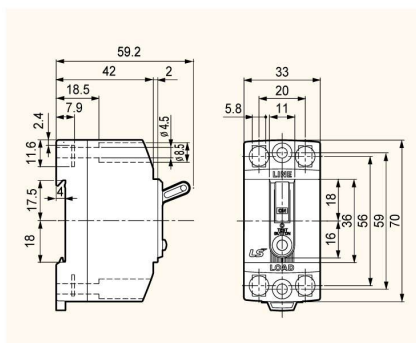
Drawing 3: Type RKS-b



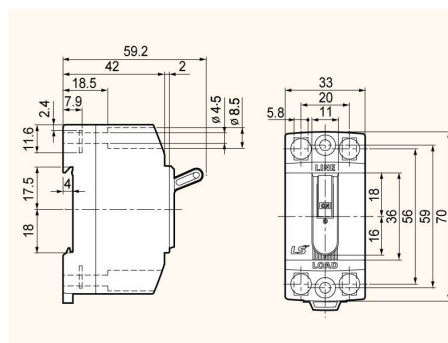
Drawing 4: Type 32KGRc & 32KGRd



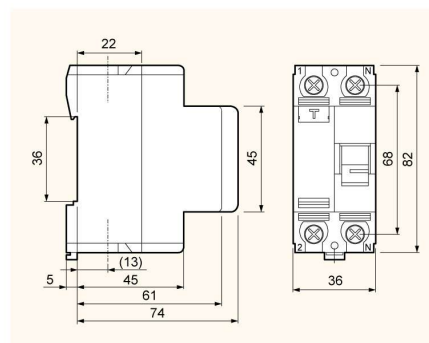
Drawing 5: Type 32GRhc & 32GRhd



Drawing 6: Type BS



Drawing 7: Type RKN

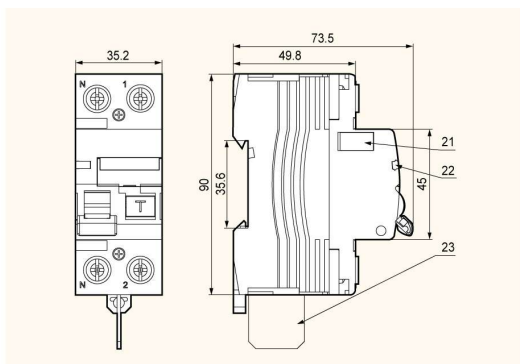




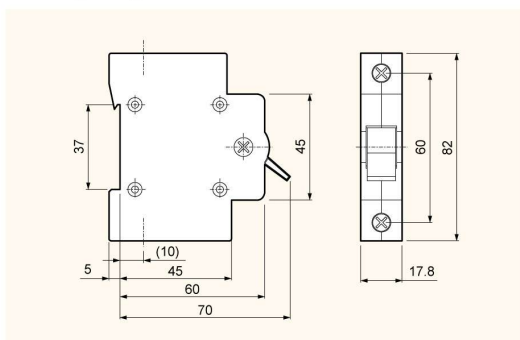
RCCB			
BS32c	BS32d	RKN	RKN-b
Ground fault and overcurrent		Ground fault	
6, 10, 15, 20, 30A	10, 15, 20, 30A	25, 32, 40, 63A	25, 32, 40, 63, 80, 100A
15, 30mA(non-adjustable)		30, 100, 300mA(non-adjustable)	
0.5I _{Δn}		0.5I _{Δn}	
2 pole		1P+N, 3P+N	
110/220VAC		230VAC(1P+N), 230/415VAC(3P+N)	
≤0.03 sec.		≤0.1 sec.	
KS C 8321		IEC 61008	
KS		KEMA, CE	SEMCO, CE
Electronic		Electro-magnetic	
Bimetallic		N.A	
1.5kA	2.5kA	-	
-		6kA	10kA
6000 operations		6000 operations	
DIN rail / Screw		On 35mm DIN rail	
33mm		18mm	
Screw clamp type (cable up to 5.5mm ²)		Lug type (cable up to 35mm ²)	
-		A/AC	
See drawing 6		See drawing 7	See drawing 8
-		-	

Isolator	
Type	BKD
Rated current, I _n	40, 50, 63, 80, 100, 125A
Number of poles	1p, 2p, 3p, 4p
Rated voltage	240/415VAC
Standard	IEC 60947-3
Electrical endurance	40, 50, 63A 80, 100, 125A
	20000 operations 10000 operations
Mount	On 35mm DIN rail
Width	17.8mm per pole
Terminal	Lug type(cable up to 50mm ²)
Dimension	See drawing 9

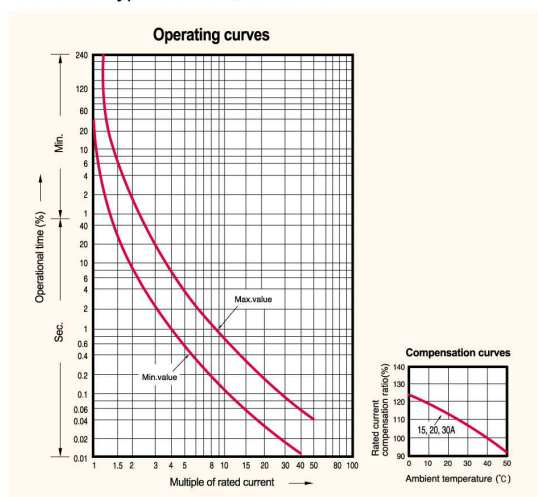
Drawing 8: Type RKN-b



Drawing 9: Type BKD



Curve 3 : Type 32KGRc, 32KGRd



Curve 4 : Type 32GRhc, 32GRhd

