

The ultimate choice
in circuit protection
starts right here...



KLINE

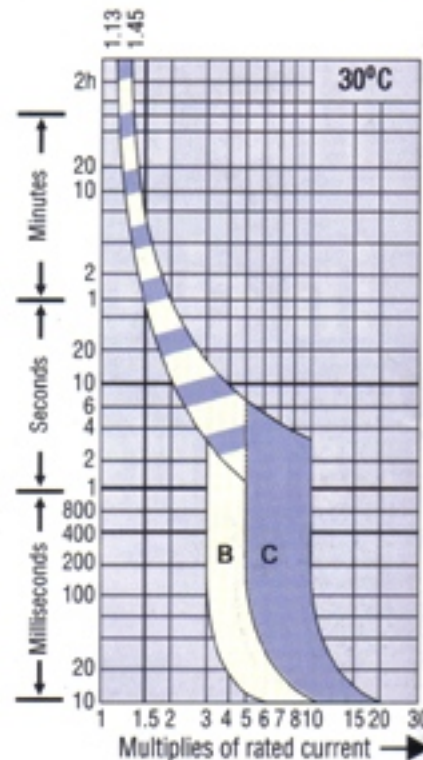
Miniature Circuit Breakers (MCBs) 10 KA

KEW

Switchgear & Fusegear

SALIENT FEATURES

- **STANDARDS** : Confirms to National / International standards IS 8828 & IEC 898
- **BREAKING CAPACITY** : (Icn) **10 KA**
- **ENERGY SAVING** : 30-70% lower watt loss then stipulated in IEC 898 1995
- **SHOCK PROOF** : Finger & hand touch safe from electric shock
- **DUAL CONNECTION** : Facility for dual connection level, Busbar and cable entry provided. Box type terminal permits bi connection facility (pin type & U type busbar).
- **OPERATING MECHANISM** : **KLINE** MCB are quick make and quick break type, with trip free mechanism facility.
- **QUALITY HOUSING** : **KLINE** MCB housing is made of self extinguishing high grade engineering plastic having good esthetics and high withstanding capacity to mechanical damage.
- **DIN CLIP** : All insulated for electrical safety and high mechanical strength with two position.
- **MID TRIP** : **KLINE** MCB offer unique features of knob assuming mid position in the event of fault. This enable clear visual identification of faulty circuit.
- **KNOB** : Sealing facility available.



Tripping Characteristic B & C to IEC : 89

Tripping curve type	Application
B	Resistive & Lighting Load
C	Motor loads

POWER LOSS

The table below gives the power loss of the device in watts for each rating per pole for the rated current.

RATED CURRENT A	0.5	1	2	3	4	5	6	10	16	20	25	32	40	50	63
KEW MCB	1.36	1.55	1.66	1.98	1.96	1.78	1.91	1.4	2.05	2.2	2.31	3.28	3.52	4.5	5.56
* as per IEC 898	3	3	3	3	3	3	3	3.5	3.5	4.5	4.5	6	7.5	9	13

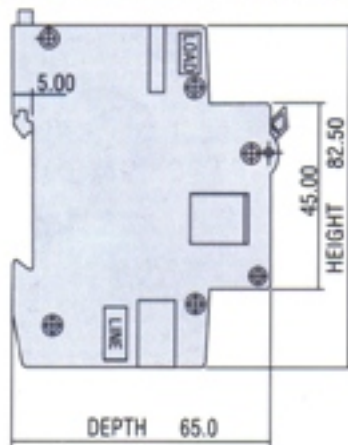
* Max. allowable Watt loss per pole

TECHNICAL DATA

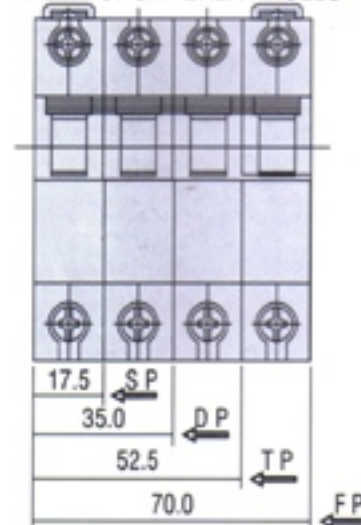
SPECIFICATION	: IS 8828(1996) IEC 898- 1995
NO. OF POLES	: SP, DP, TP, FP, SPN & TP
RATED CURRENT	: 0.5 A - 63 A
RATED VOLTAGE	: 240 / 415 VAC & 220V
RATED BREAKING CAPACITY	: 10000 A (as per IS 882 240 / 415V)
RATED FREQUENCY	: 50 / 60 HZ
TRIPPING CHARACTERISTIC	: B & C
INSULATION VOLTAGE	: 500V
IMPULSE WITH STAND VOLTAGE	: 5 KV (1.2/50 us)
DEGREE OF PROTECTION	: IP 20
MOUNTING	: CLIP ON DIN RAIL 35 mm
AMBIENT TEMPERATURE	: -5°C to +55°C
TERMINAL CAPACITY	: 1 - 25 mm ²

NOTE :-0.5A to 5A available in C curve characteristic only

OVER ALL DIMENSIONS OF MCB's



WIDTH OF DIFFERENT POLES



KEW

KUSUM ENGINEERING WORKS

Paras Compound, S. V. Road, Goregaon (West) Mumbai 400 104.
Phone : 8722006 / 8721589 Fax No. 91-22-8730291.
E-mail: kusumeng@vsnl.com Website : www.kewelectricals.com



Available at :