

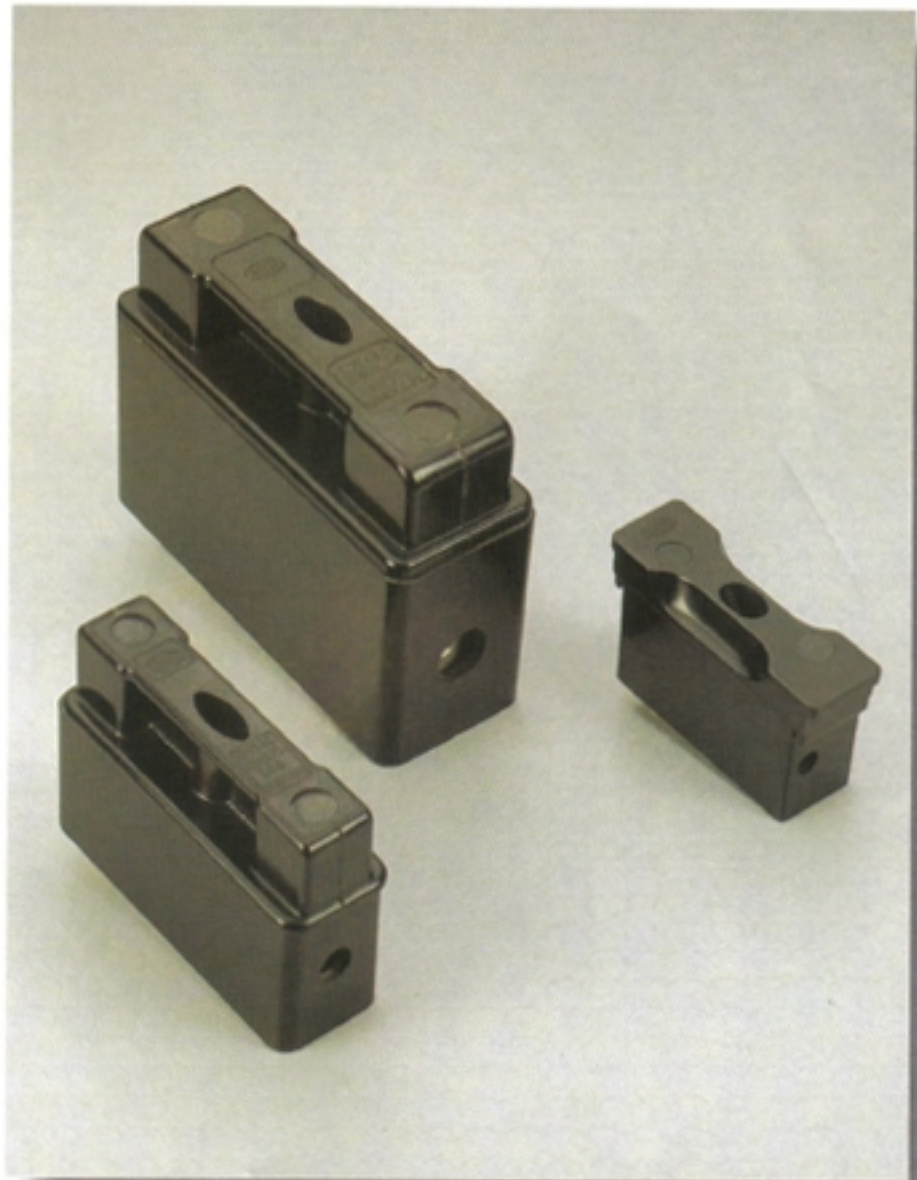
# Fuse Holders (bakelite) For HRC Fuse Links

## RANGE

Available in Current Rating of 20,32,63 & 100 AMPS 415V AC.

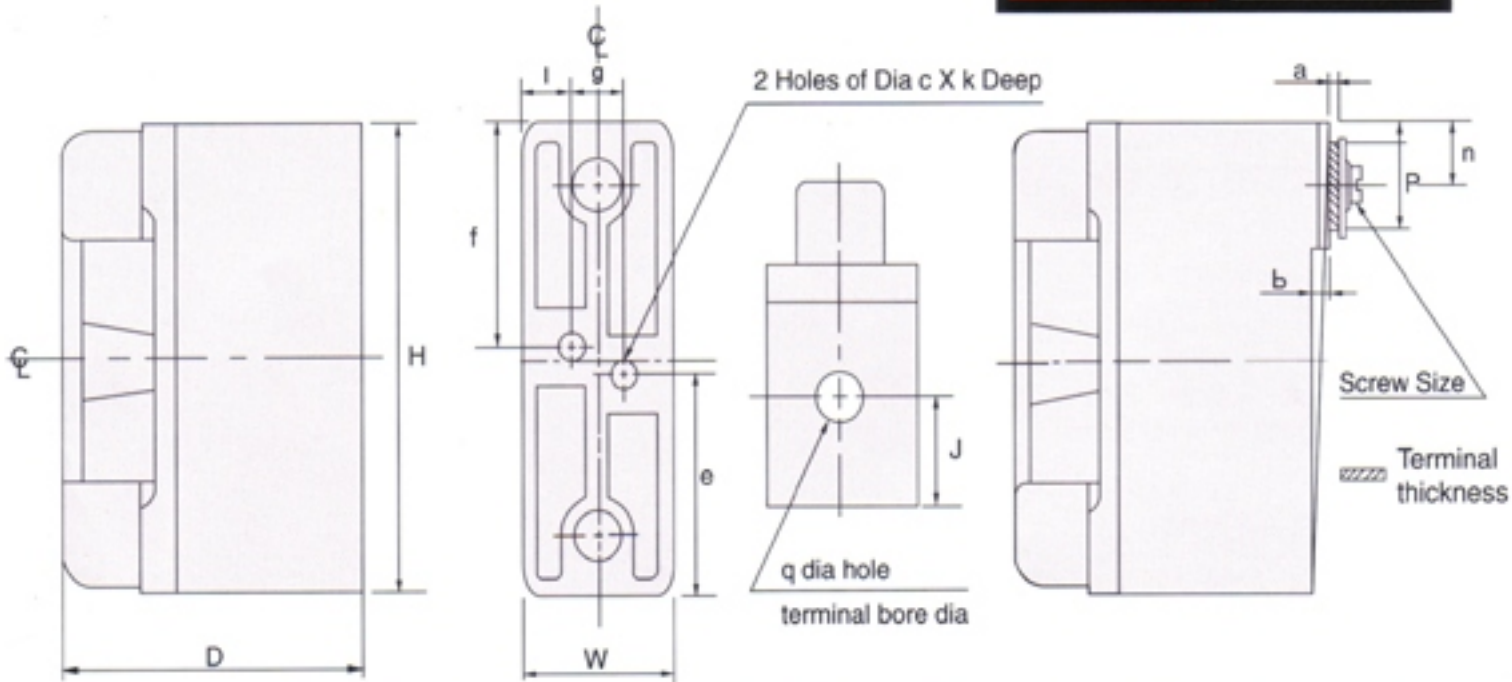
## DESIGN FEATURES

- Fuse Holders are available in two types FF & FB.
- **Type FF for front busbar connection.** In this type the incoming & outgoing cables are connected to the base terminals at either end.
- **Type FB for busbar connection.** In this type the busbars can be connected to the back stud & cable to the terminal at the bottom end of the fuse base.
- All current carrying parts are electroplated.
- Fuse holder mouldings are made of high grade flame - retardant, non-hydroscopic phenolic mouldings.
- Extruded brass terminals having adequate size of cable hole of accommodate aluminium cable.
- Pressure springs give maximum surface contact for minimum temperature rise & lower watt loss.
- Fuse carriers suitable for bolted type H.R.C. fuse links to IS:13703: 1993.
- Aperture giving visible indication of operation of HRC fuse links in mounted position.

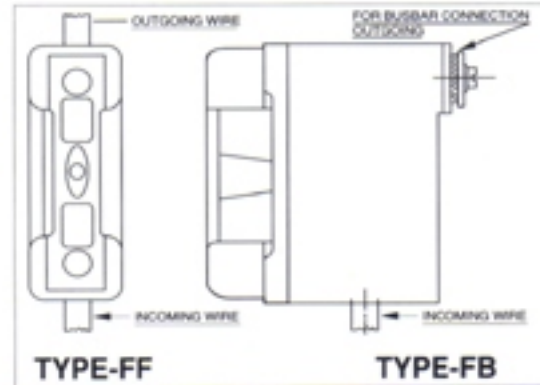


**KEW**

Switchgear & Fusegear

**TYPE****FF  
FB**

Rating AMPS	List Nos.		Suitable <b>KEW</b> HRC Fuse Link	Maximum Power Acceptance (W)	Terminals	
	Front Connected	Busbar Connected			Bore $\phi$ (mm)	Accomodate Cable Upto
32	32 FFC	32 FBC	KNS (2A to 32A)	Complies with IS: 13703 Part : 2 - Sec : 2	5.0	16mm <sup>2</sup>
32	30 FF	30 FB	KIA (6A to 32A)		6.5	25mm <sup>2</sup>
63	60 FF	60 FB	KIS (6A to 63A)		8.0	35mm <sup>2</sup>
100	100 FF	100 FB	KCP (32A to 100A)		12.0	95mm <sup>2</sup>

**OVERALL DIMENSIONS (mm)**

LIST NOS.	RATING A	CONNECTION	H	W	D	a	b	Dia C x K Deep	e	f	g	j	l	n	p	q	SCREW SIZE
32 FFC	32	Front	80.5	25	43	-	-	5.5 x 5.5	40.0	40.0	12.5	17	12.5	-	-	5	-
32 FBC	32	Busbar	80.5	25	43	1.2	-	5.5 x 5.5	40.0	40.0	12.5	17	12.5	9.5	9	5	M5 X 10
32 FF	32	Front	98.5	32	65	-	-	6.0 x 6	46	46	23	22	10	-	-	6.5	-
32 FB	32	Busbar	98.5	32	65	0.6	3.5	6.0 x 6	46	46	23	22	10	12.7	11.0	6.5	M6 X 12
63 FF	63	Front	105	35.5	71.5	-	-	5.8 x 4.5	46.5	52	24	23	12.0	-	-	8	-
63 FB	63	Busbar	105	35.5	71.5	1.2	3	5.5 x 4.5	46.5	52	24	23	11.0	13	16	8	M6 X 15
100 FF	100	Front	130.5	48.5	91.5	-	-	8 x 7	54	54	33.5	28	15	-	-	12	-
100 FB	100	Busbar	130.5	48.5	91.5	1.2	4	8 x 7	54	54	34	28	15.5	18	22	12	M10 X 20

**KEW****KEW FUSEGEAR PVT LTD**

Modi Kunj,  
10 Friends Society,  
J.V.P.D. Scheme,  
Mumbai - 400 056

☎ : 8722006 / 8721589  
☎ : 91-22-8730291

*Switch to Perfection*

Available from: \_\_\_\_\_

Since product improvement is a continuing KEW policy & specifications of any product are subject to change without prior notice.